



*Ranch*



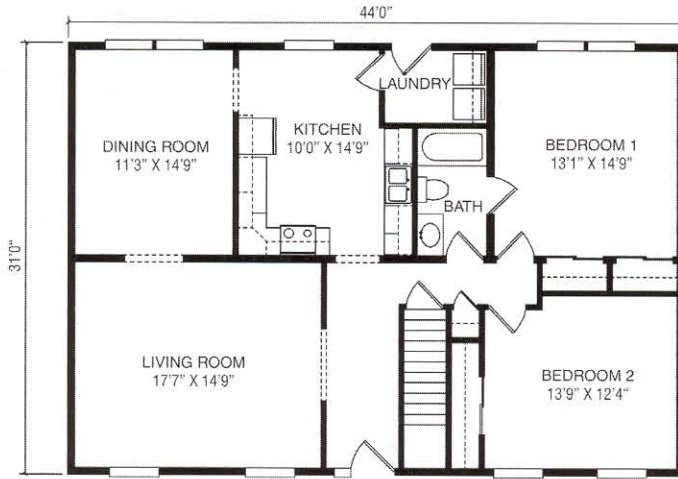
*Cape*

*Highland Series*  
*31 Wide Portfolio*  
*Designed for Living Well*

  
**MUNCY HOMES**

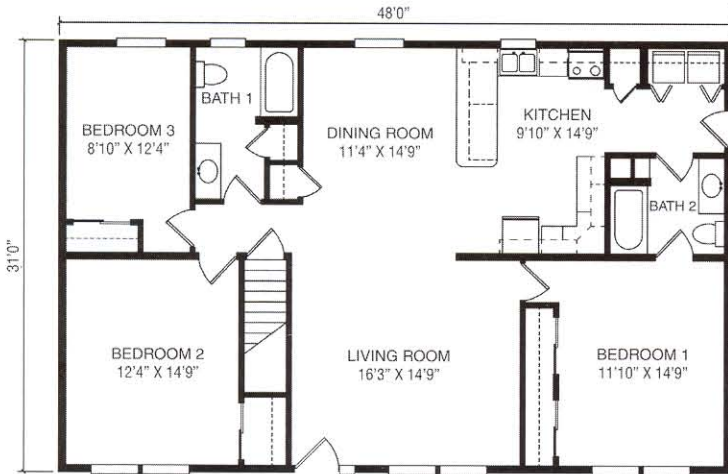


*Two Story*



**Plan No. 704**  
1364 SQ. FT.

Enjoy comfortable living with two bedrooms, a formal living and dining room, spacious kitchen, laundry room and an inviting foyer – a perfect starter home.



**Plan No. 708**  
1488 SQ. FT.

Everyone's a winner with this home. Three bedrooms, a dining room and large living room make this the ideal starter home.



**Plan No. 710**  
1488 SQ. FT.

Spacious living room, open dining room, two full baths, and three bedrooms make this the perfect home for families who enjoy open living.



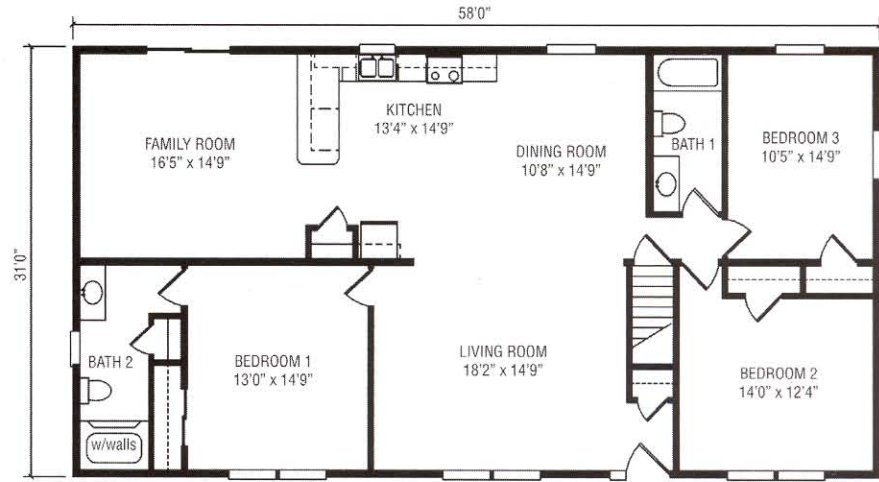
**Plan No. 715**  
1612 SQ. FT.

Traditional styling with an efficient layout makes this three bedroom, two bath ranch a classic.

**Plan No. 725**

1798 SQ. FT.

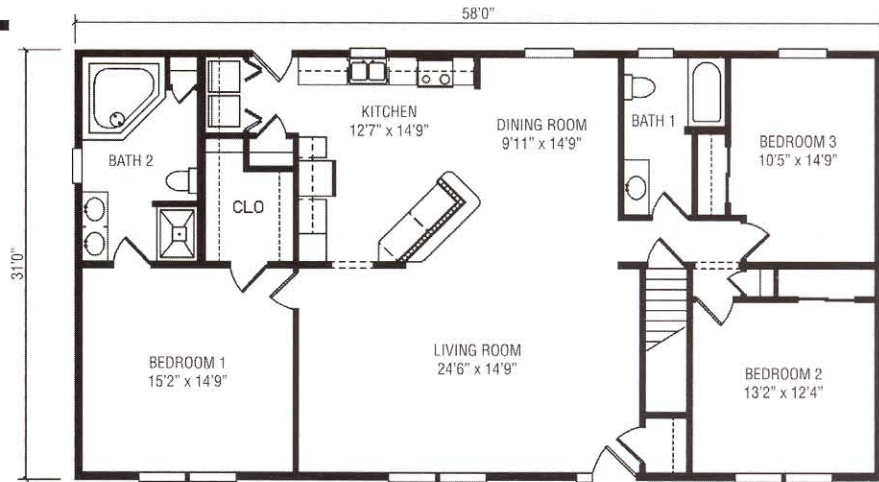
Spacious family living with four bedrooms, two full baths, a large family room and an open living and dining room. Truly a perfect home for the family who enjoys additional space.



**Plan No. 726**

1798 SQ. FT.

Enjoy exceptional living with grand master bedroom suite offering a generous walk-in closet and luxurious private bath; spacious formal living room, and large kitchen with breakfast/snack bar.



**Plan No. 730**

1860 SQ. FT.

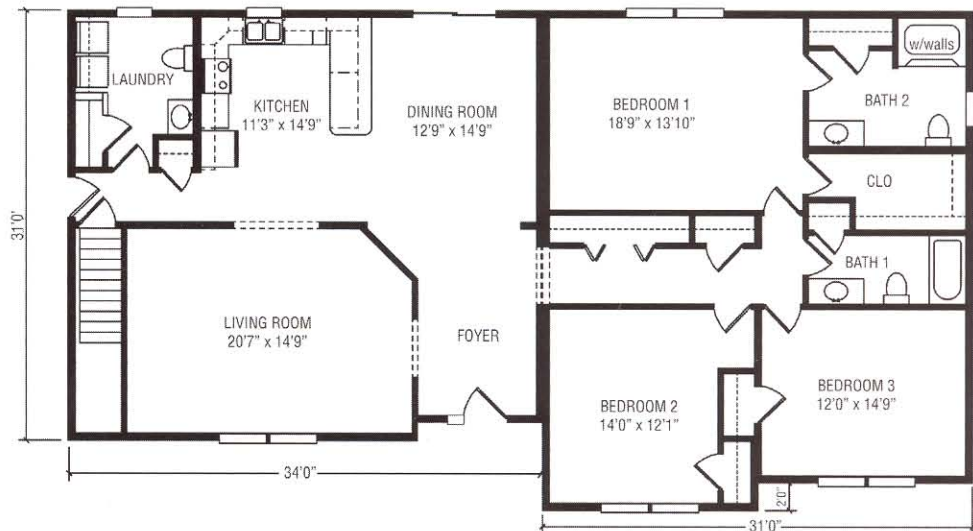
This four-bedroom plan features a luxurious master bath and a spacious kitchen/dining area. Perfect for the family that desires space and convenience.



**Plan No. 770**

2139 SQ. FT.

This T-Ranch features three bedrooms, two full baths, walk-in closet, a formal living room, a laundry area with a half-bath and a very functional kitchen. An inviting entry foyer welcomes you to a home for all families.

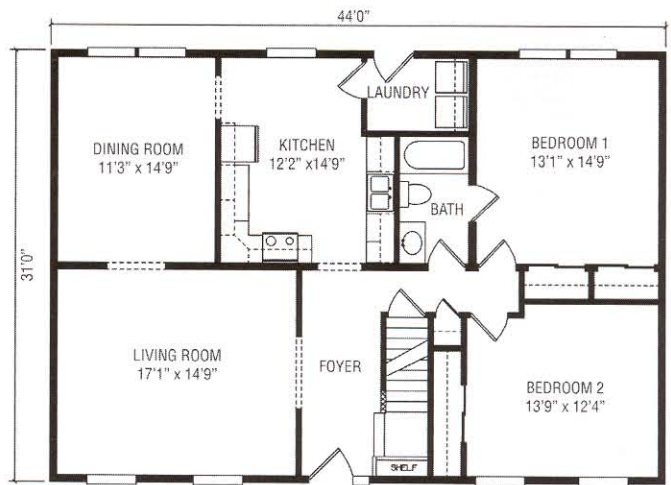


# Cape

## Plan No. 750

1364 SQ. FT.

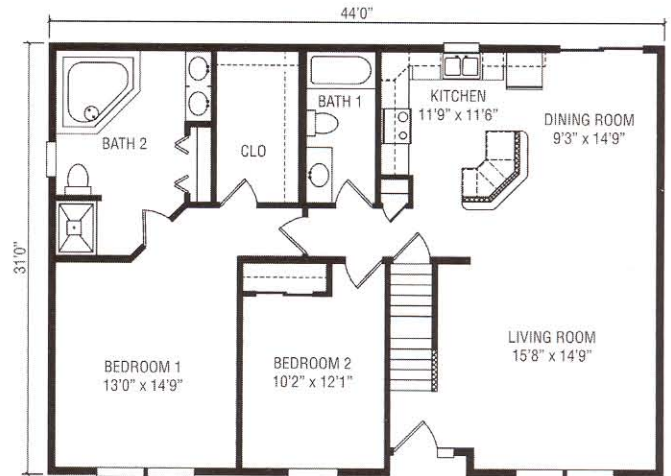
A charming home with features you'll love. Two large bedrooms, formal living and dining rooms, a spacious kitchen and an inviting entry foyer make this home a winner.



## Plan No. 751

1364 SQ. FT.

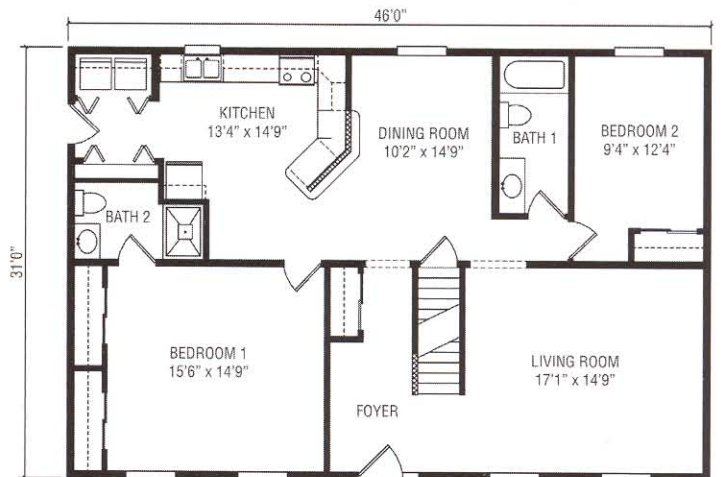
Exceptional living with a master bedroom suite, walk-in closet and grand master bath, open living and dining room, and kitchen – creating the perfect home for the family who enjoys open space.



## Plan No. 754

1426 SQ. FT.

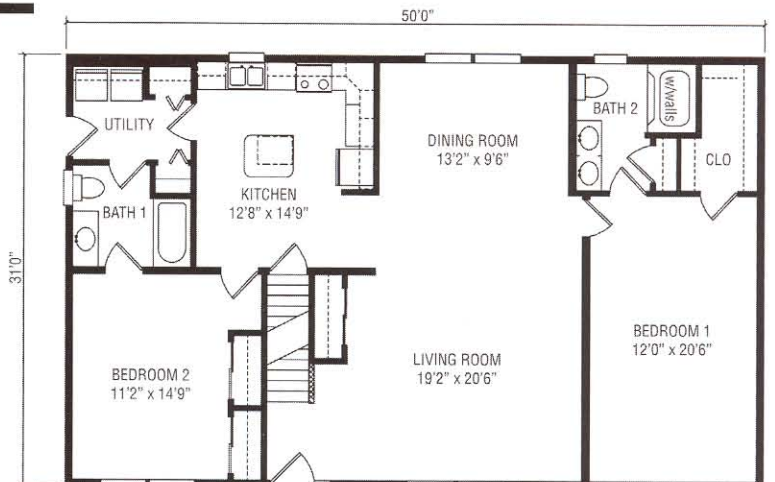
A cape designed for family living, with many exceptional amenities, such as a large master bedroom suite, a spacious kitchen with a pantry closet, and washer/dryer area. The formal dining and living rooms make this an appealing home to all families.



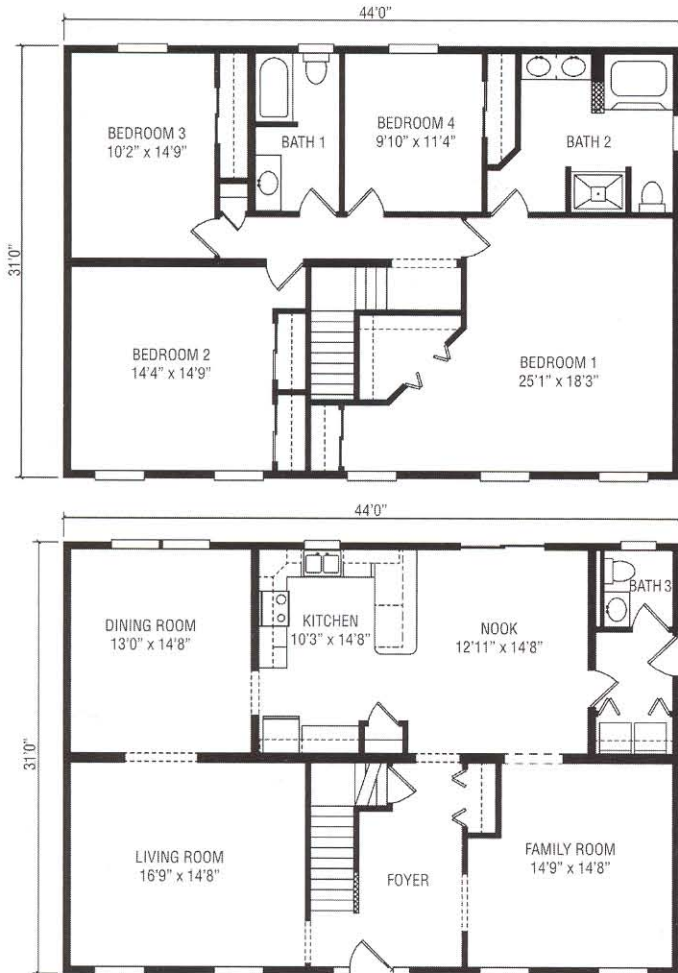
## Plan No. 760

1550 SQ. FT.

Master bedroom with adjoining bath offers seclusion from the living area that features a formal dining room, huge open living room, expansive kitchen that is functional with an adjacent utility room. There is also a second bedroom with it's own bath and walk-in closet – just a few of the features of this dynamic design.



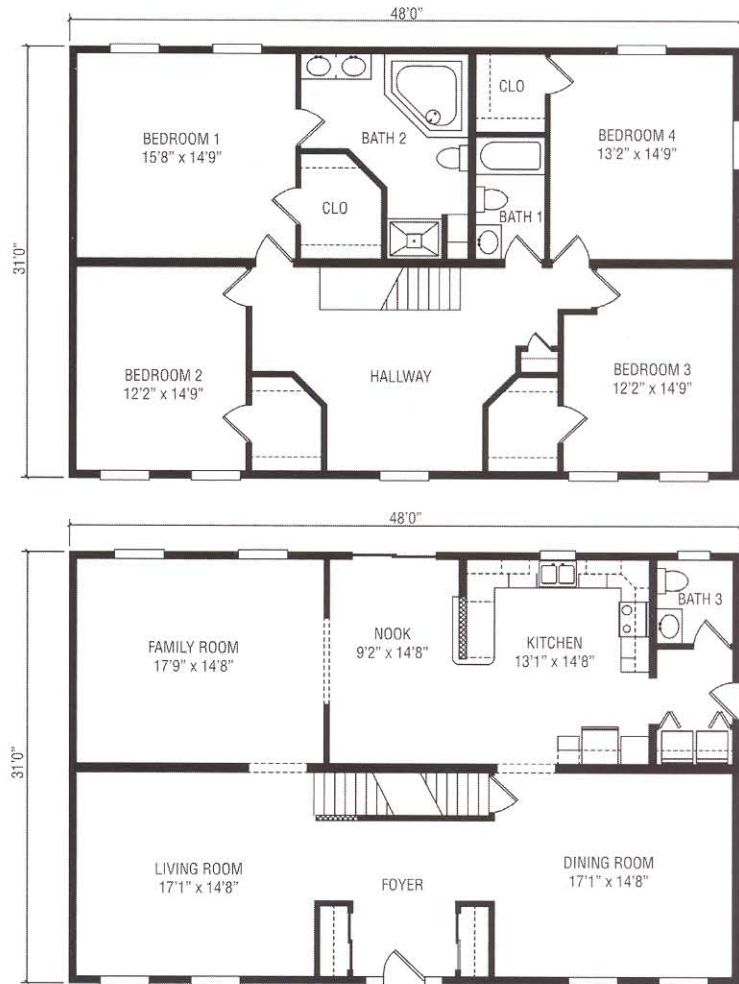
# Two Stories



## Plan No. 780

2728 SQ. FT.

Space for the growing family... super master bedroom suite with private bath and dressing/sitting area, one and one half baths, three additional bedrooms, spacious family room and a large, sunny breakfast nook.

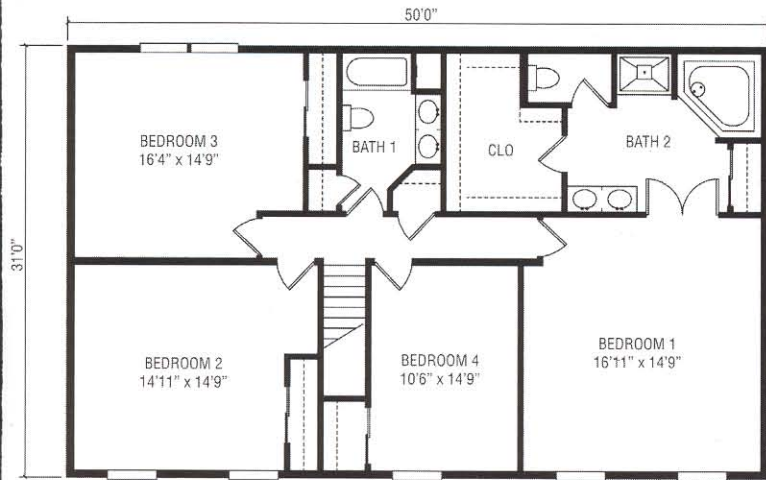


## Plan No. 785

2976 SQ. FT.

Exceptional living and abundant space with features you'll love. Massive formal entry, formal living and dining rooms, a family room, spacious kitchen with a breakfast nook, large master bedroom suite, bonus area on second floor hallway, four bedrooms with closets galore, two and one half baths – all this welcomes you to comfortable living.

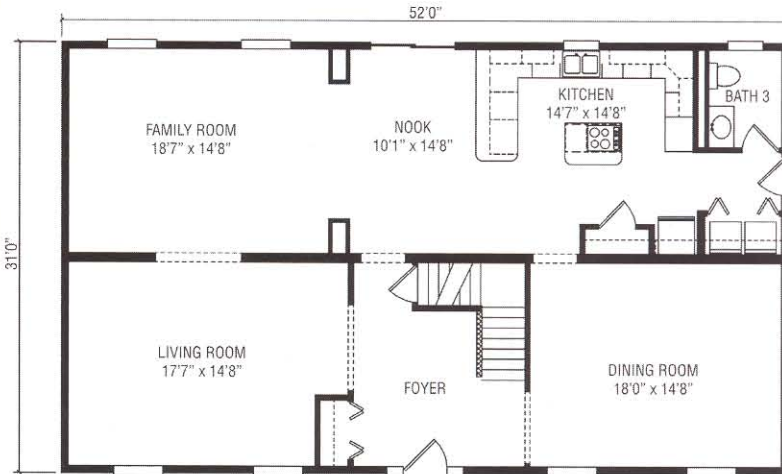
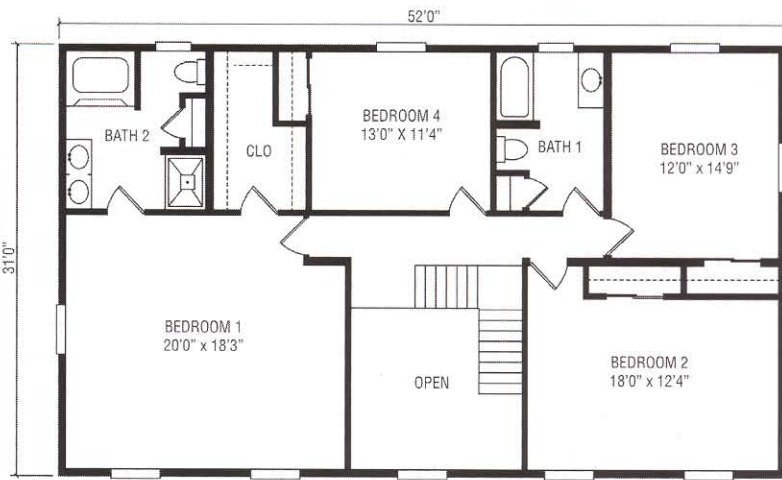
# Two Stories



## Plan No. 786

3100 SQ. FT.

So many facets make this home a gem – features like a grand master bedroom suite with walk-in closet, deluxe private bath, three additional spacious bedrooms, one and one half baths, a laundry room, formal living and dining rooms, and a family room.



## Plan No. 792

3224 SQ. FT.

Elegant space for living and entertaining, with a spacious family room, formal living and dining rooms, a grand entry foyer, four bedrooms with ample closet space, and two and one half baths.



# MUNCY HOMES

1567 Route 442 Highway, Muncy, PA 17756

(570) 546-2261

[www.muncyhomes.com](http://www.muncyhomes.com)



*Due to our continuing program of Product Improvement, Plans, Specifications, Materials and prices are subject to change without notice.*

*The artist renderings shown may contain optional or suggested features.*

5M KBPPT (REV. 02/06)

## Your Builder/Developer:

THE BUILDER/DEVELOPER IS AN INDEPENDENT BUSINESSMAN, NOT AN AGENT OF MUNCY HOMES. From time to time, Builder/Developer may perform service work at the request of Muncy Homes, but in doing so Builder/Developer is still an independent contractor and is alone responsible for the quality of his work. MUNCY HOMES SHALL HAVE NO RESPONSIBILITY OR LIABILITY FOR ANY ACT OR OMISSION OF BUILDER/DEVELOPER OR ANY MATERIAL PROVIDED BY BUILDER/DEVELOPER, UNDER ANY CIRCUMSTANCES.