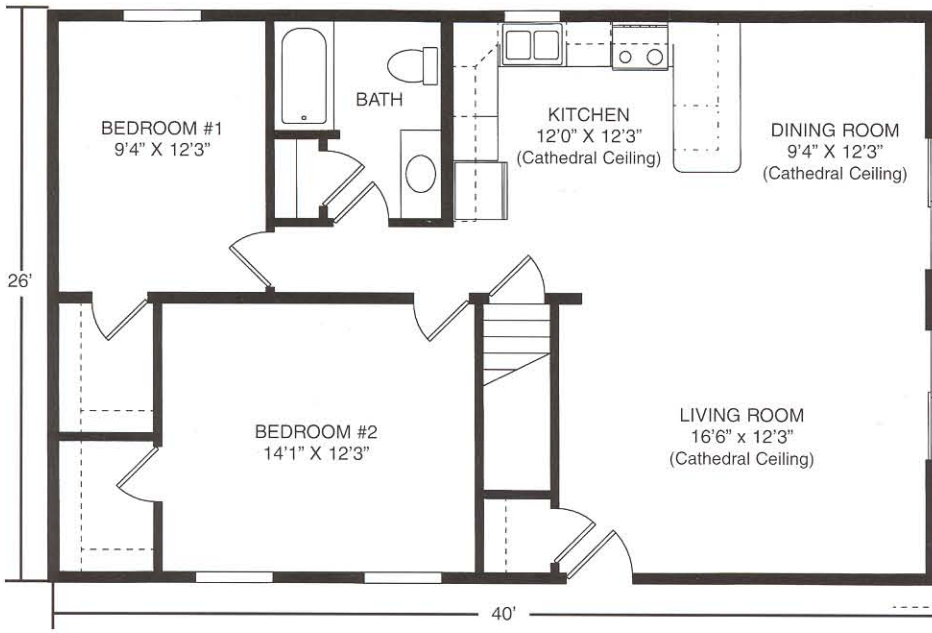


VACATION SERIES

***CRESTMONT SERIES***

*Retreat to the relaxation created by beautiful design*

**MUNCY HOMES**



## *The Valleyview*

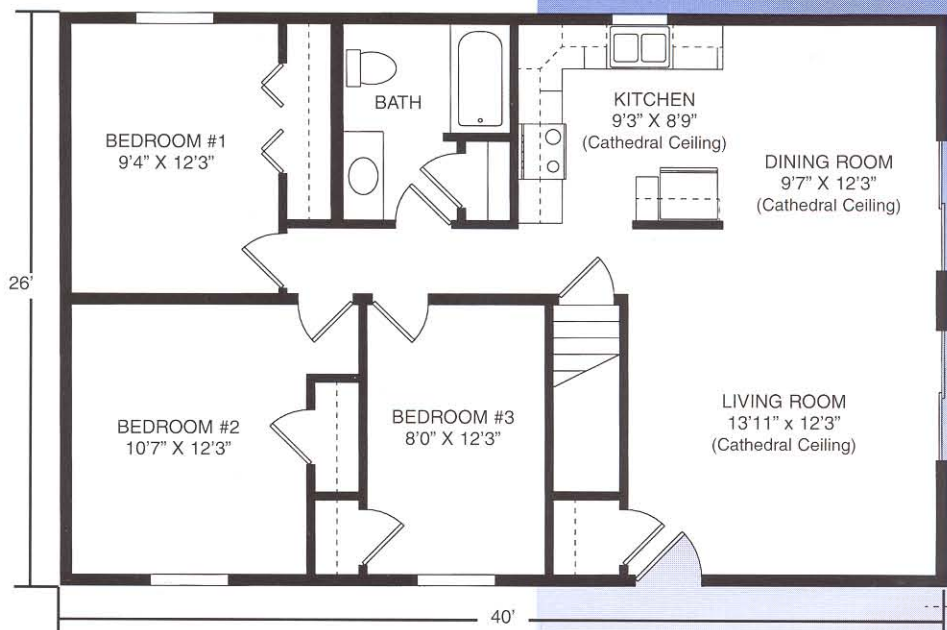
**Plan No. 466** ♦ 1040 SQ. FT.

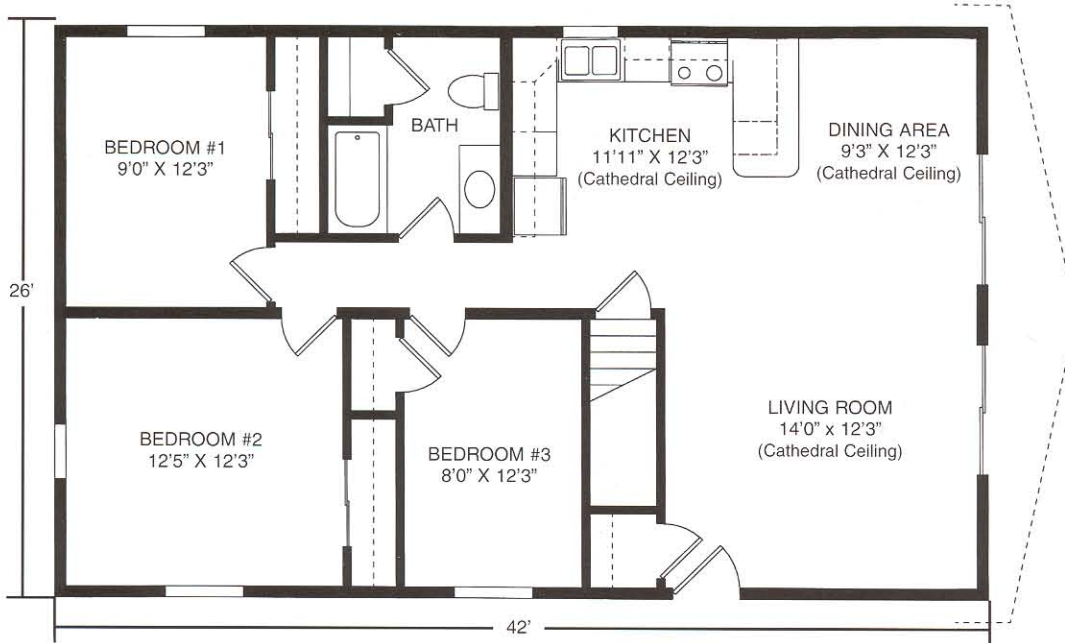
Featuring a breakfast/snack bar in kitchen and cathedral ceiling in living room, dining room, and kitchen. Also available in 23'8" & 27'6" widths.

## *The Seaview*

**Plan No. 469** ♦ 1040 SQ. FT.

Cathedral ceiling open above living room, dining room and kitchen are highlights of this three bedroom home. Also available in 23'8" & 27'6" widths.

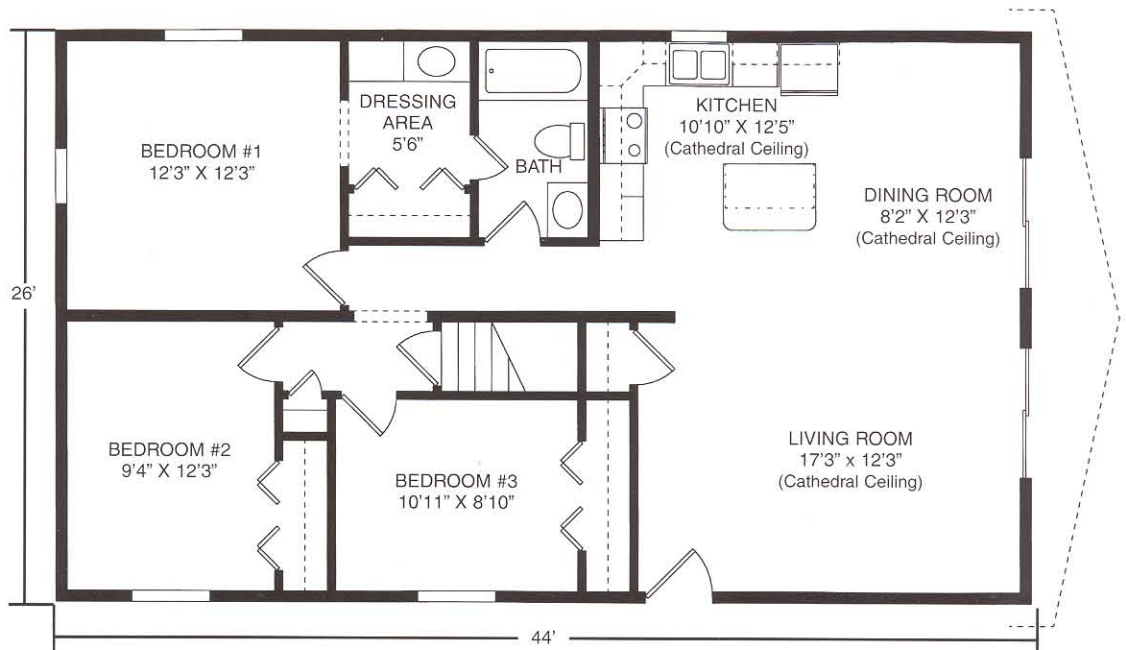




## *The Ridgeview*

**Plan No. 467** ♦ 1092 SQ. FT.

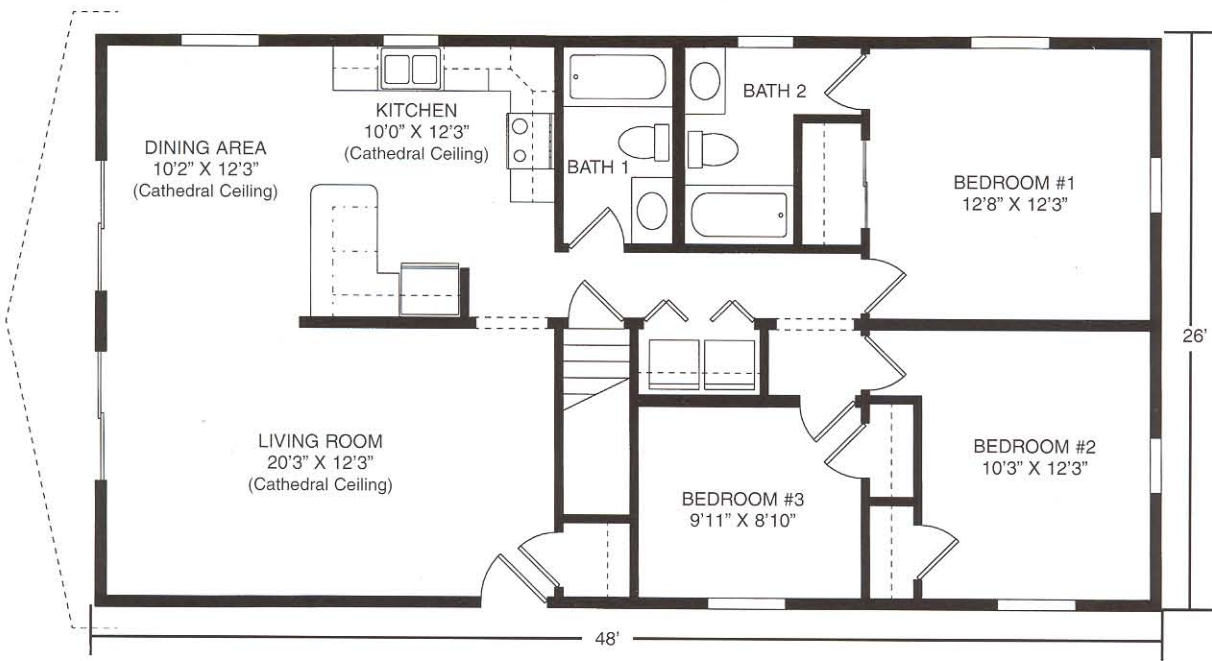
Perfect for vacations or year 'round living with three large bedrooms, breakfast/snack bar in kitchen, and dramatic cathedral ceiling in living room, dining room and kitchen. Also available in 23'8" & 27'6" widths.



## *The Cedarville*

**Plan No. 471** ♦ 1144 SQ. FT.

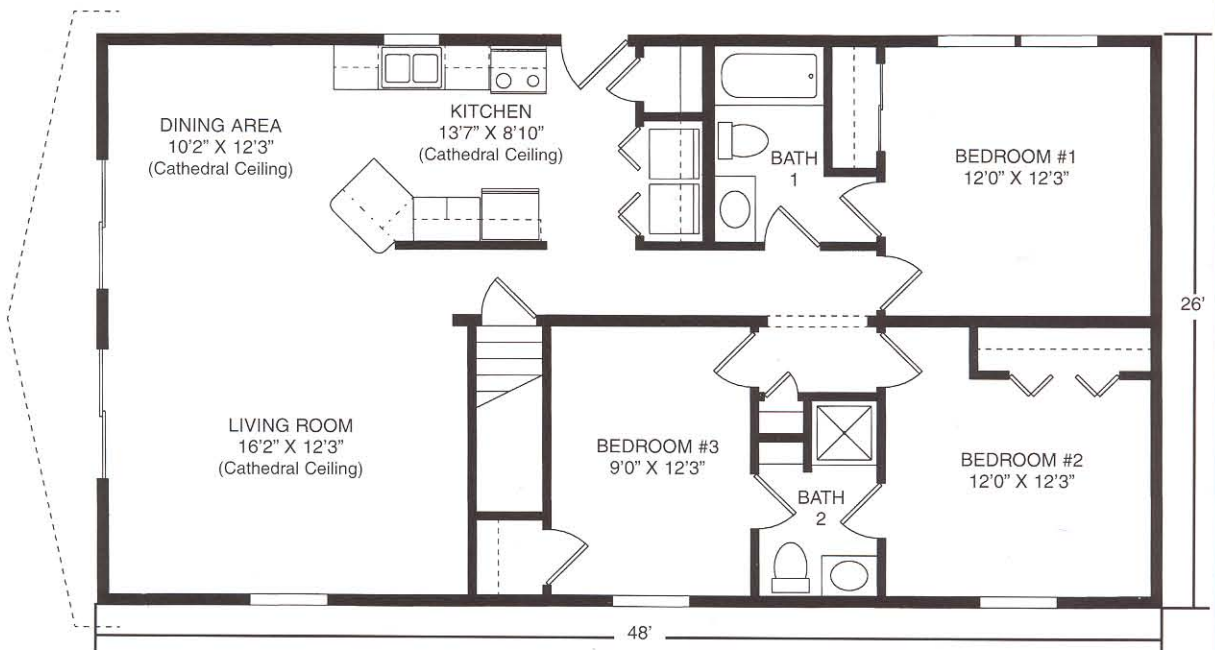
Escape to privacy with master bedroom suite with dressing area and private access to bath, spacious kitchen with island. Cathedral ceiling in living room, dining room and kitchen. Also available in 23'8" & 27'6" widths.



## *The Creekside*

**Plan No. 473** ♦ 1248 SQ. FT.

Convenience and beauty, with master bedroom suite with adjoining, private bath, two additional bedrooms, full bath, utility closet on first floor, breakfast/snack bar in kitchen, and cathedral ceiling above living room, dining area and kitchen. Also available in 23'8" & 27'6" widths.

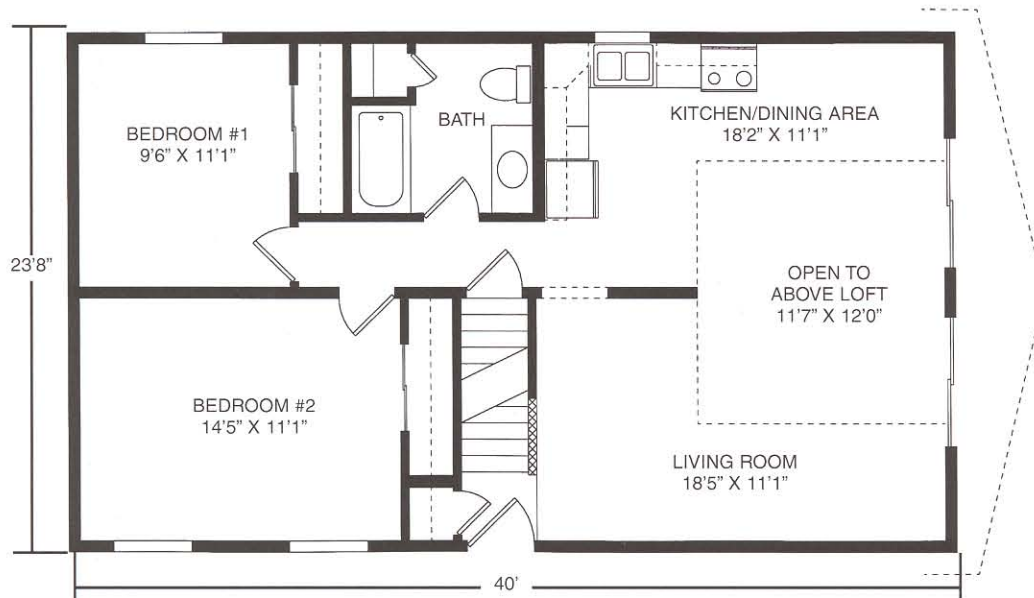
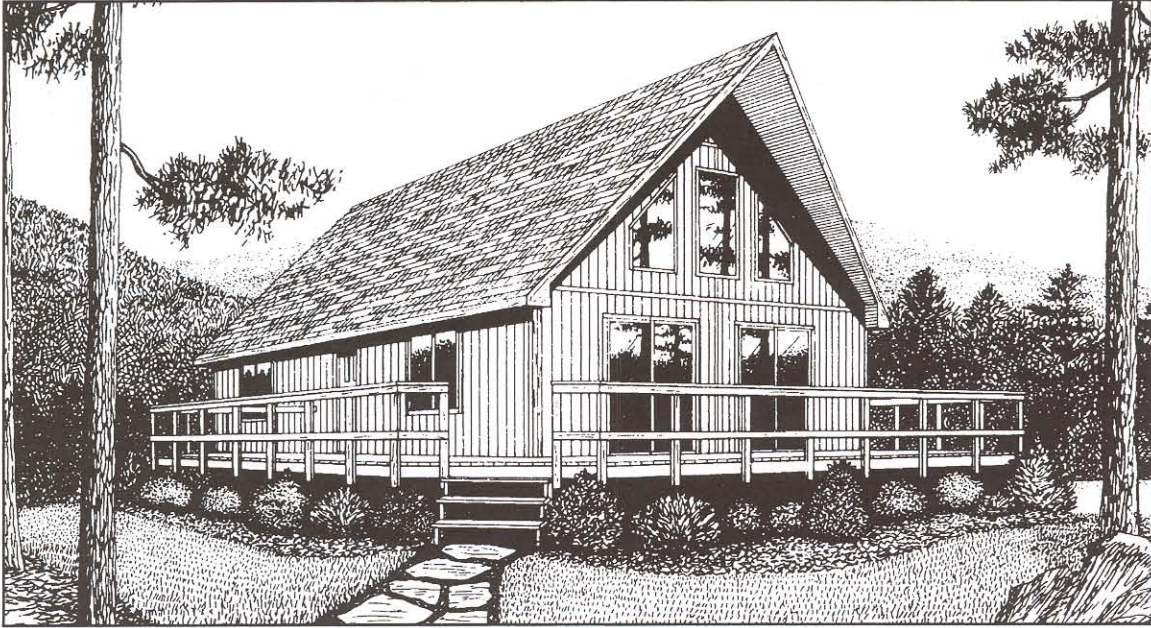


## *The Brookside*

**Plan No. 472** ♦ 1248 SQ. FT.

The ultimate in comfort and privacy with master bedroom suite with private access to main bath, two additional bedrooms with adjoining private bath, first floor utility room and cathedral ceiling in living room, dining area and kitchen. Also available in 23'8" & 27'6" widths.

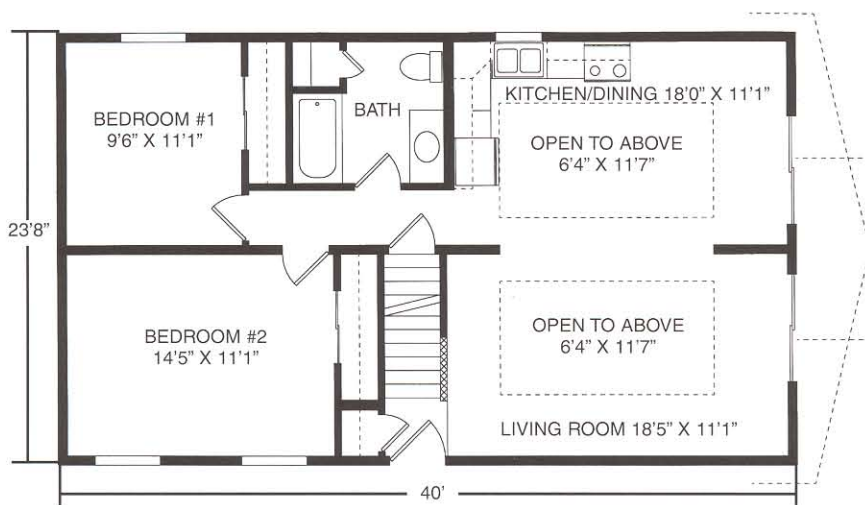
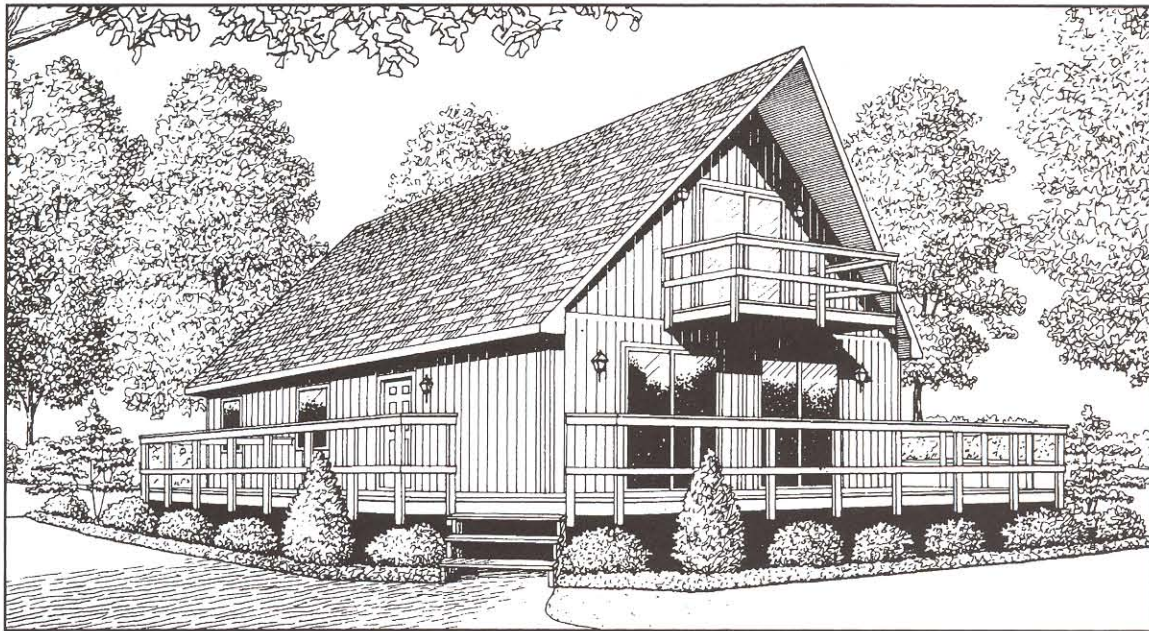
# VACATION SERIES



## *The Summit*

Plan No. 165 ♦ 947 SQ. FT.

Space and light create the perfect haven for escape from everyday living with ceiling in living room and kitchen/dining area open to above loft. Also available in 26'0" & 27'6" widths.



## *The Vista*

**Plan No. 164** ♦ 947 SQ. FT.  
 Unique features make this a dream home. The living room as well as the expansive kitchen/dining area open to above sitting area or loft. Sliding glass doors open onto second floor deck. Also available in 26'0" & 27'6" widths.

Crawl space option available in all plans.

# MUNCY HOMES

1567 ROUTE 442 HWY. • MUNCY, PA 17756

(570) 546-2261

www.muncyhomes.com

MEMBER:

**MODULAR**  
 BUILDING SYSTEMS ASSOCIATION  
 BUILDING FOR TOMORROW

*Due to our continuing program of Product Improvement, Plans, Specifications, Materials and Prices are subject to change without notice.*

*Renderings and floor plans are promotional illustrations that approximate size and may depict optional or suggested features.*

5M KBFPT 3/05

## *Your Builder/Developer*

THE BUILDER/DEVELOPER IS AN INDEPENDENT BUSINESSMAN, NOT AN AGENT OF MUNCY HOMES. From time to time, Builder/Developer may perform service work at the request of Muncy Homes, but in doing so Builder/Developer is still an independent contractor and is alone responsible for the quality of his work. MUNCY HOMES SHALL HAVE NO RESPONSIBILITY OR LIABILITY FOR ANY ACT OR OMISSION OF BUILDER/DEVELOPER OR ANY MATERIAL PROVIDED BY BUILDER/DEVELOPER, UNDER ANY CIRCUMSTANCES.